

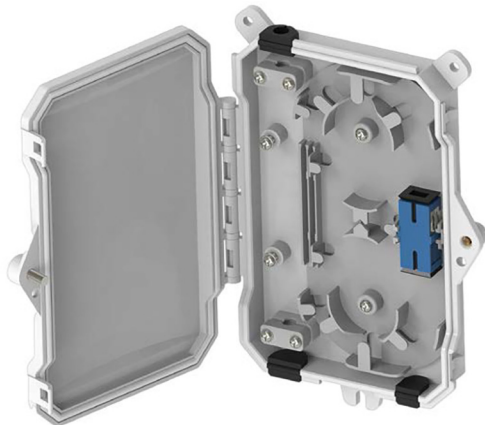
## **FTTH Outlet** **TEN-FWO12E**



### Features and Benefits

The TEN-FWO12E is an external version of the TEN-FWO12 FTTH Wall Outlet, which is designed to allow individual fibers to be exited to serve a property via a window cut in a fiber cable. It is designed for outdoor mounting applications, and is IP65 rated and equipped so that the connection of the fiber cables are safe and simple, and the overall installation becomes aesthetically pleasing. SC simplex and LC duplex adapters are supported along with spare fiber management.

- **Suitable for Outdoors Mounting, IP65 Rated**
- **Hinged Lid with Secure Catches and Optional Locking Screw**
- **Supports both SC Simplex and LC Duplex Adaptors**
- **Delivered Empty or with Adaptor and/or with Pigtail(s) in a Suitable Box**



# TEN-FW012E

## Optical Passives/FTTH Outlet Series



General			
Dimension (L x W x H)	155.5 x 107 x 20 mm	IP Rating	IP65
Material	PC + ABS	Supported Adaptors	SC, LC
Operating Temperature	-40 - +85 °C	Color	White or Black
Ordering Information			
P/N	Description		
TEN-FW012E-0	External Version of FTTH Wall Outlet 12 without Adaptors or Pigtails		
TEN-FW012E-1LCAP	External Version of FTTH Wall Outlet 12 with LC/APC Duplex Adapter and LC/APC Pigtail (G.657.A1)		
TEN-FW012E-1SCAP	External Version of FTTH Wall Outlet 12 with SC/APC Adapter and SC/APC Pigtail (G.657.A1)		

